

MONTHLY MEMBERSHIP PROGRESS REPORT

LOCATION NEW JERSEY

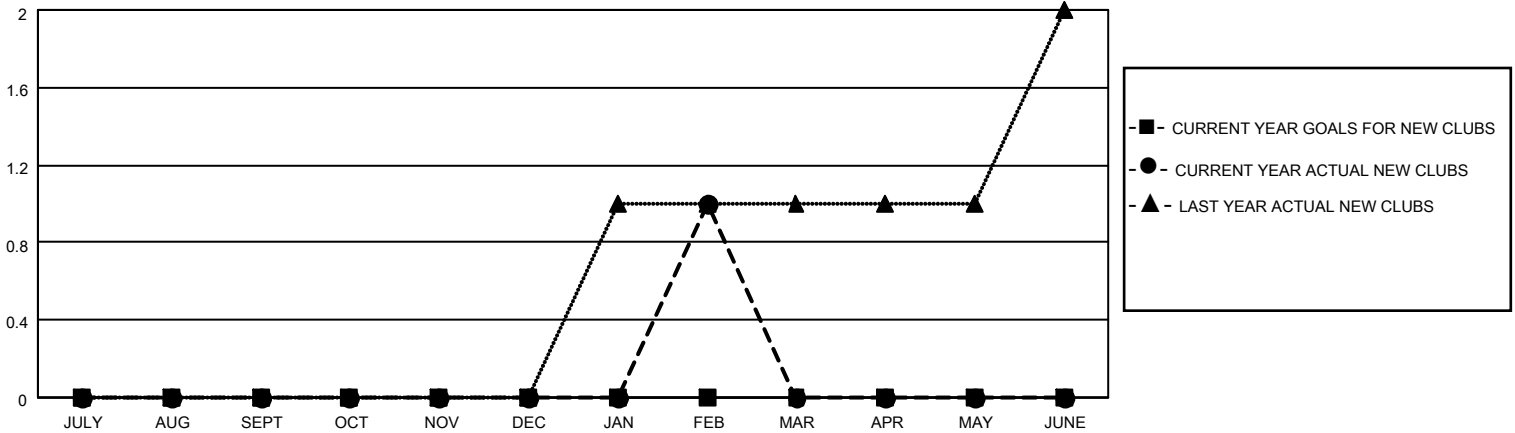
District 16 J

Results as of: 2/28/2021

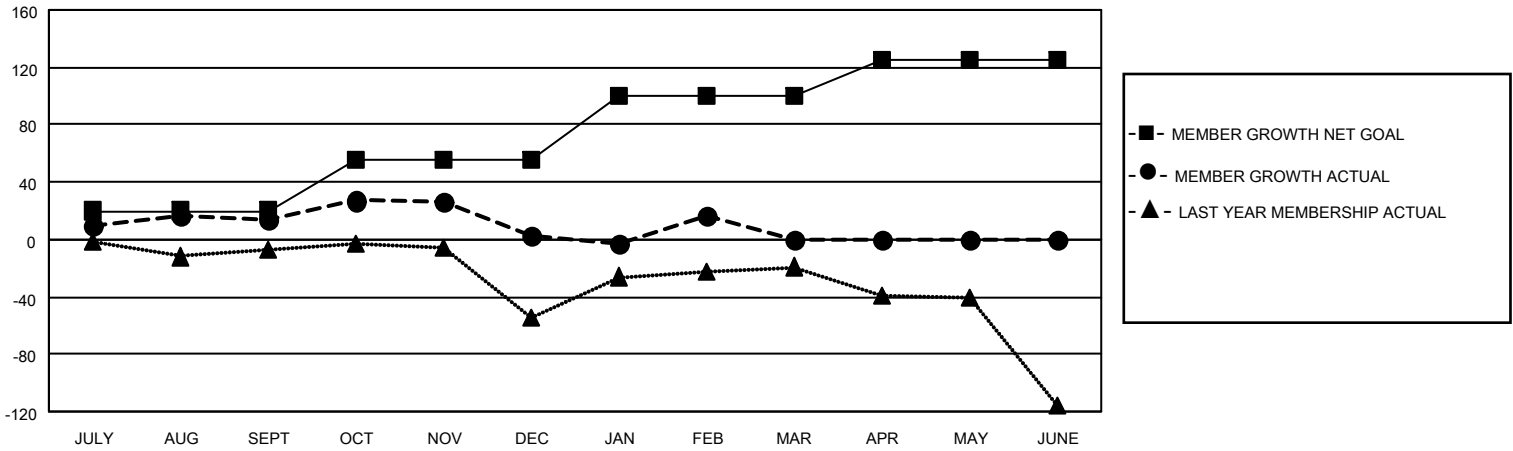
Clubs			
RESULTS FOR 2020-2021			
QUARTER	NEW CLUB GOAL	NEW CLUBS	DROPPED CLUBS
JULY/AUG/SEPT	0	0	1
OCT/NOV/DEC	0	0	0
JAN/FEB/MAR	0	1	0
APR/MAY/JUNE	0	0	0

Members			
RESULTS FOR 2020-2021			
QUARTER	MEMBER GROWTH NET GOAL	MEMBER GROWTH ACTUAL	DROPPED MEMBERS ACTUAL (including transfers)
JULY/AUG/SEPT	20	45	30
OCT/NOV/DEC	35	46	51
JAN/FEB/MAR	45	31	16
APR/MAY/JUNE	25	0	0

GOALS AND ACTUAL NEW CLUBS CUMULATIVE



GOALS AND ACTUAL MEMBERS CUMULATIVE



DROPPED CLUBS: 1	21 CLUBS OF 60 ADDED 1 OR MORE NEW MEMBERS	GENDER DISTRIBUTION
DROPPED MEMBERS	CLICK HERE FOR CUMULATIVE MEMBERSHIP DATA	MALE 889 (61.10%)
DECEASED 13		FEMALE 566 (38.90%)
CLUB CANCELLED 0		TOTAL FAMILY UNIT MEMBERS 331
OTHER 84		FAMILY MEMBERS PAYING HALF DUES 173
TOTAL 97		